

# Gasoline stations in Akershus

Kirsten Linde, curator NMF

(Petter tønner Jakobsen, curator NMF)

MiA- Museums in Akershus

The 7th Norwegian Conference on  
the History of Science 2018



Photo: MiA

# The gasoline project

- Photodocumentation of 142 gasoline stations
- Collecting items
- Research (interviews, photo/archives)
- Bookproject

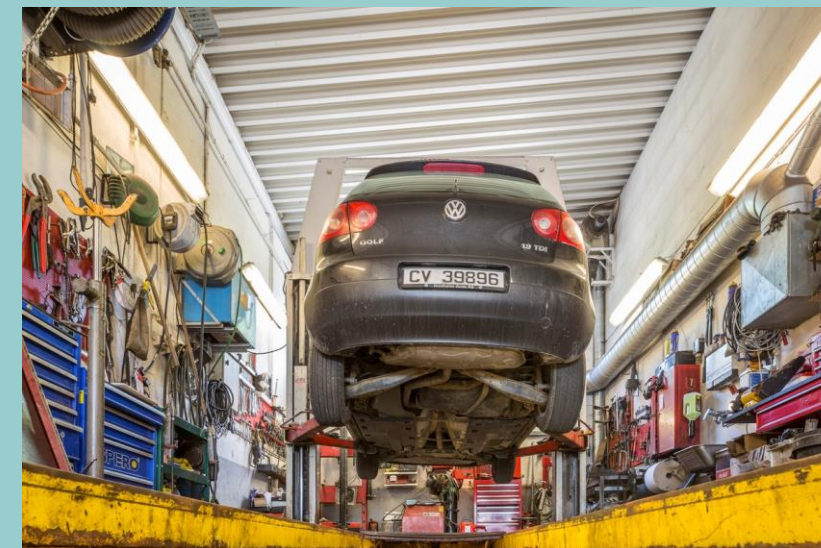
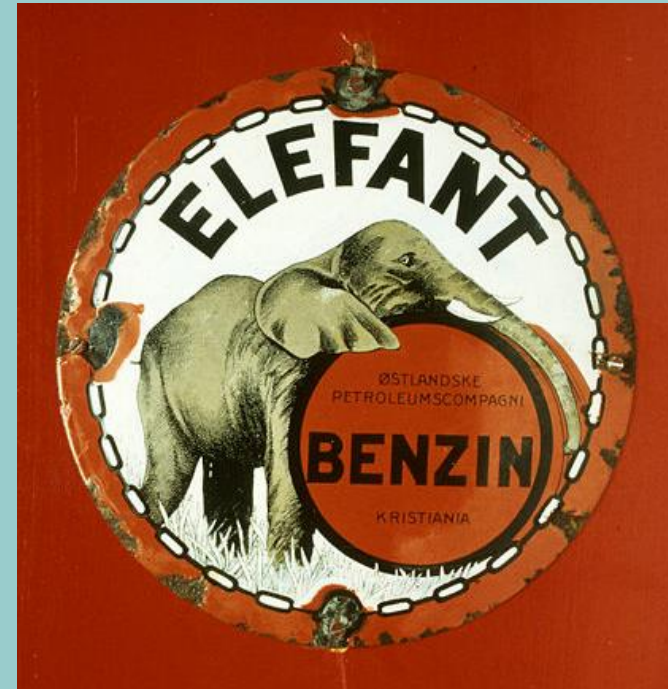


Photo: Arkivverket, MiA



# Innovations and technical developments at gasoline stations



Photo: Helgeland museum, Oslo museum, MIA



Foto: Ørnelund, Leif

Oslo Museum

# Example: Pumping systems

1900-1920 (1946)

1906 The Tokheim Dome Oil Pump

1920 USA legislation tank systems

Factors:

*Customer need*

*Problem solving*

*Legislation*



Photo: MiA, Arkivverket, Norsk oljemuseum



Norsk Oljemuseum

# Example: Pumping systems

1920-1965

Electrical driven pumps

Mechanical counters

Factors:

*Development upon known technology*

*Innovative nostalgic technology*



Photo: Norsk Vegmuseum, Arkivverket, MiA

# Example: Pumping systems

1965 -1970

Count box

Factors:

*Small item – great impact*

*Saving money on staff*

*Negative customers*

*Other effects*

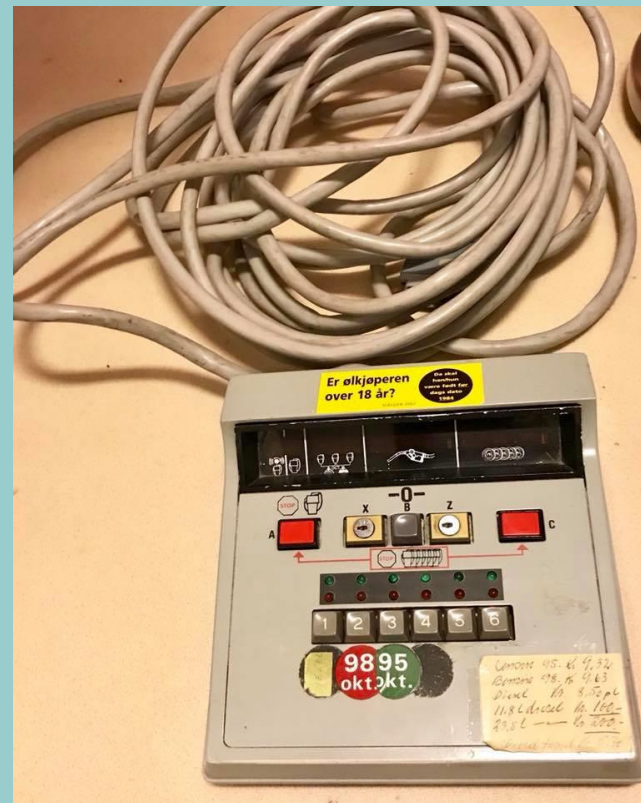
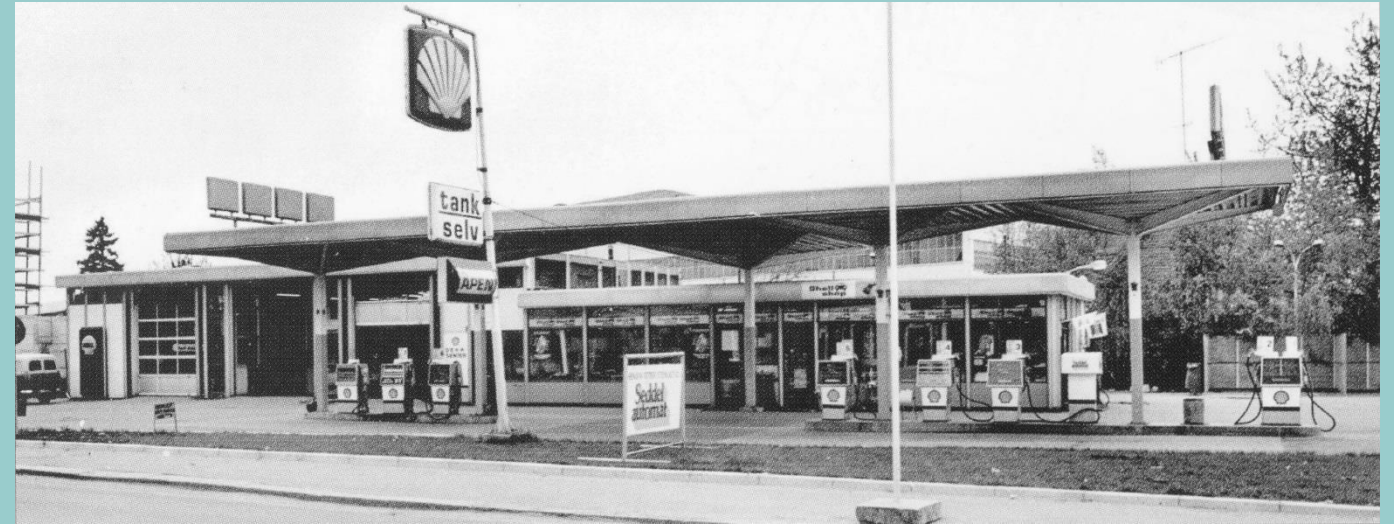


Photo: Privat, MiA, Aftenposten



# Example: Pumping systems

1970-1985

Cash machines and digital systems

1978 Norol customer card

1982 Norol first in the world – all bank credit cards

*Bank collaboration*

*Saving money on staff*

*Positive customers*

*Problem solving*



Photo: Norsk Vegmuseum, MIA

# Example: Car Wash systems

1920-

Wash Bowl in Chicago

Factors:

*Innovation failure*



Photo: Free license





# Example: Car Wash systems

1914 - 1960

Assembly line system

Factors:

*Known technologies*

*Costly on wages*



Photo: Free license



# Example: Car Wash systems

1940-1960

Sprinkler systems

Railsystem

Factors:

*Known technologies*

*Break through*



Photo: Alamy stock photo, Free license



alamy stock photo

BXH8D8  
www.alamy.com

# Example Car Wash systems

1961

Semiautomatic Car Wash system

1961 First in London, England

1961 First Shell, Fredrik Stangs gate, Oslo

Factors:

*Future expectations*



Photo: Gettyimages, Norges Handels og Søfartstidende

# Example: Car Wash systems

1962-1965

1962 German Wesumat – Round car wash machine

1965 Trondhjem Drosjeeieres parkeringshus Esso

Factors:

*Invention failure*



Photo: Washtec, Adresseavisen

# Example Car Wash systems

1963-1965

Fully automatic analog system

1963 Kleindienst Germany – Three brush system

1965 Norway – Fina stasjon, Solli plass

Factors

*Known technology used in a new way*

*Saving money on staff*

*New commodity – new needs*

**REN BIL PÅ 2 MINUTTER**

KR.  
**7,-**

Nå er det lett å få bilen vasket!  
Vår heltautomatiske bilvaskemaskin  
gjør arbeidet på 2 minutter - uten  
at De behøver å gå ut av bilen. Bil-  
lig er det også. Stikk innom - når  
som helst. Fra nå av ser De ha ren  
bil bestandig ...

**MER BESKYTTELSE**  
**Mobil**

**Jarvik Automobilforretning%**  
NANSETGATEN 36-38 - TEL. 8 33 50

**Skinnende ren bil  
på 2 minutter**

Den første automatiske bilvaskemaskin  
i Bærum er nå installert på Ramstad  
Motorcenter

Hurtig, skånsom og effektiv vask  
med QVICK-O-MATIC  
automatisk bilvaskemaskin

De sparer både tid og penger!

Inn til **Esso** for ren bil

RAMSTAD MOTORCENTER

Photo: Asker og Bærum Budstikka, Østlandsposten

**MiA**

# Inventions in shop systems



Photo: Sverreborg Trøndelag Museum, MiA



# MiA-Museums in Akershus



Photo: MiA